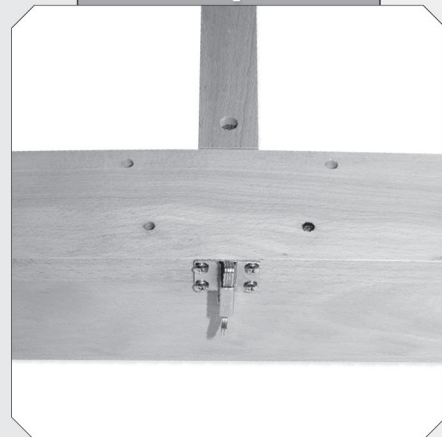


Step 7.



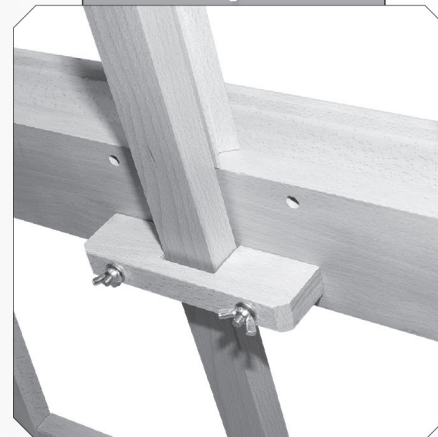
Screw trigger from (Bag E1), to base of accessories tray part #8, into pre-drilled holes as shown.

Step 8.



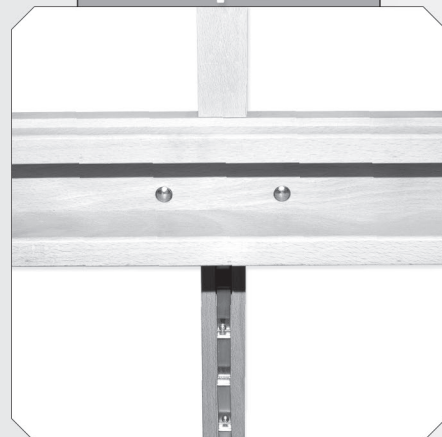
Pull trigger to allow tray to slide up, raise tray until the trigger can sit on the metal steps of central column part #4. This is the easel height adjustment.

Step 9.



The next step requires attaching the small C shape piece of wood. This piece has a wider cut out on one side. Ensure this piece is attached so that the wider cut out is placed towards the top. This will allow the full tilt range.

Step 10.



Fix small C shaped piece of wood over central A frame column onto accessories tray with nut and bolt from (Bag G) as shown.

Step 11.



Slide the top canvas support onto the easel mast part #7, and use one of 2 remaining screws to secure it in place.

Step 12.



Attach remaining black plastic handle bolt to the back of the mast guide. This allows adjustment of working angle. Your new easel is now ready for use!

mont marte

Go to www.montmarte.net to view **FREE** video lessons and demos.
Join Mont Marte Creative Connection to get loads of regular **FREE** tips and hints.



mont marte

MEA0004C

**Floor Easel
with Tilt**

User Manual
*Assembly Required

Description...

BEECH WOOD

Width: 56cm

Length: 95cm

Height: 88cm - 160cm

Holds Canvas: Up to 120cm

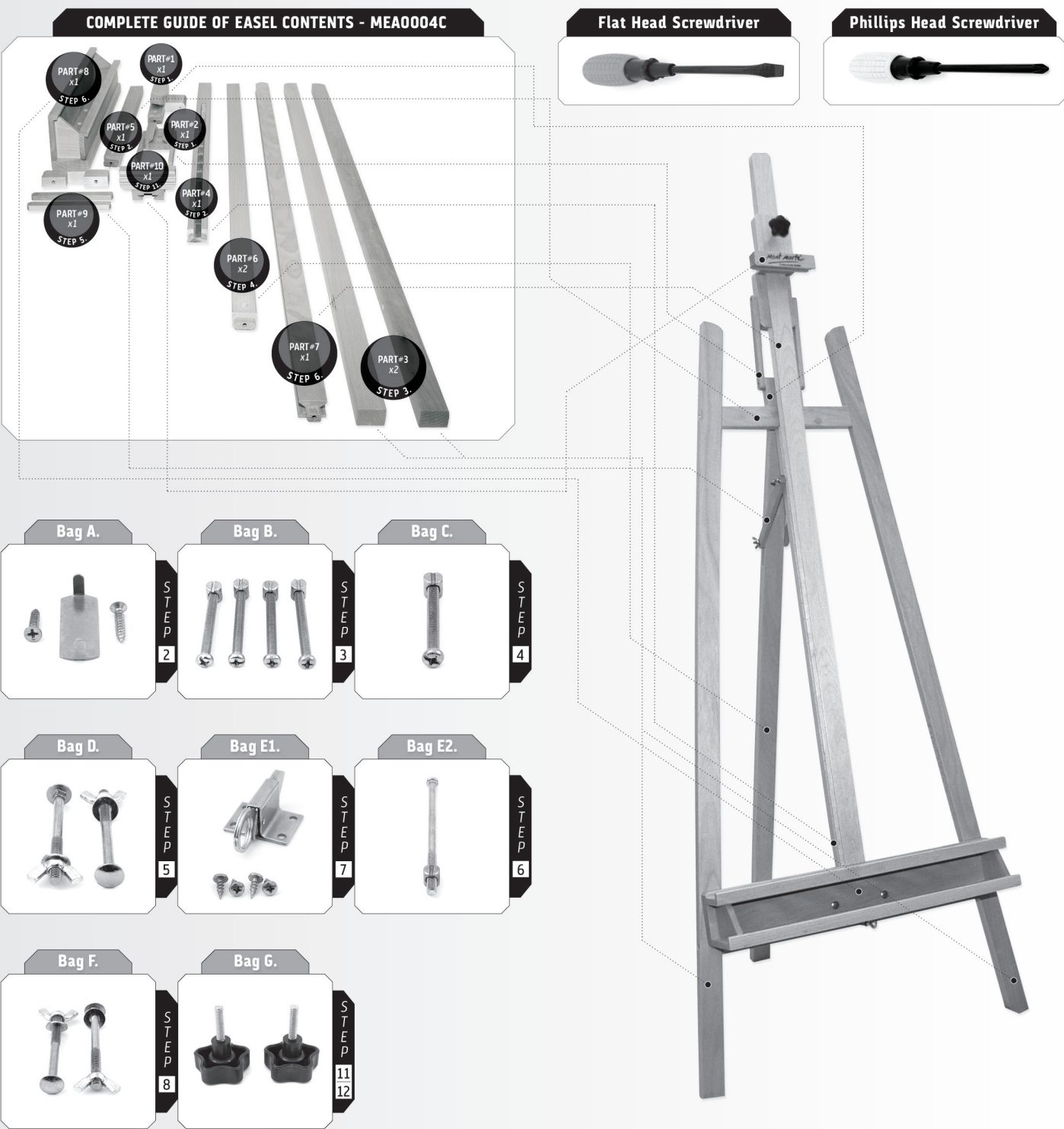


English

CONTENTS

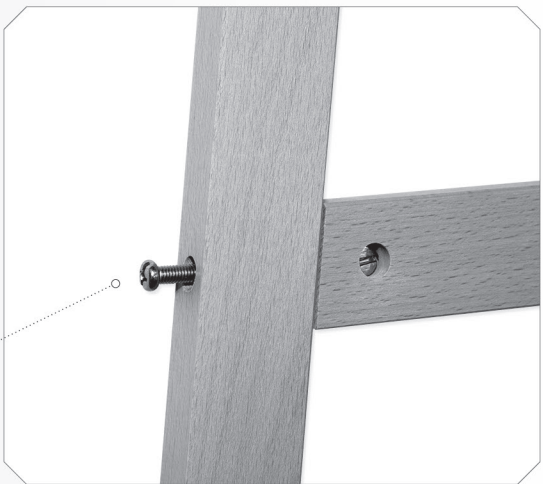
ASSEMBLY REQUIRED

13 x Pieces of Wooden Easel Parts	2
8 x Bags of Screws, Bolts & Wheels.	2
1 x 4 Page User Manual	2
1 x Phillips Head Screwdriver	3
1 x Flat Head Screwdriver	3

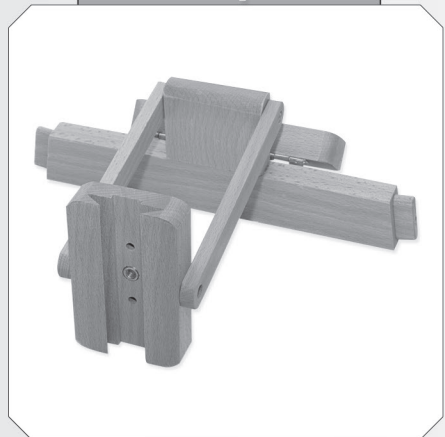


*Note

Many steps in assembly require the use of a bolt & barrel nut. Drop nut into shallow hole & insert bolt in from the side & through the barrel nut. Tighten the bolt with the supplied Phillips Head screwdriver.



Step 1.



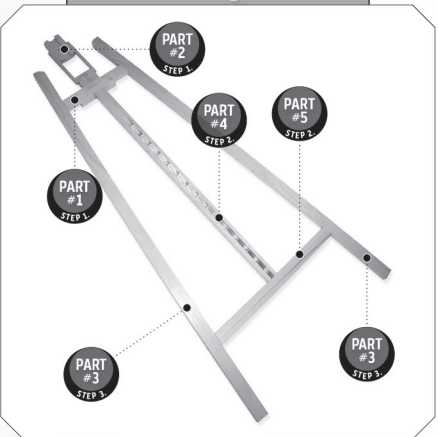
Using the screws from **(Bag A)**, fix top support bar of the A frame to the mast guide exactly as shown. NOTE: In step 2 ensure that the piece with the metal strip is placed into the A frame support and not into the shorter back leg support.

Step 2.



Connect piece from previous step to the piece with the metal strip part #4, and the bottom of the A frame support part #5. These pieces slot together and no screwing is required. Ensure metal strip is placed so that it enters the bottom of the A frame support bar.

Step 3.



Attach side supports part #3, by slotting onto piece from previous step. Ensure rounded ends of the side supports are at the top. Turn A frame over, drop in barrel nut and insert bolt from side and through barrel nut to secure using **(Bag B)**.

Step 4.



Attach the back support leg part #6, to A frame using bolt and barrel nut from **(Bag C)** as shown.

Step 5.



Using bolts and wing nuts from **(Bag D)**, attach the 2 small thin pieces part #9, to the central column of the A frame and the back support leg. Ensure washers are placed on the same side as the wing nuts.

Step 6.



Slot easel mast part #8, into top of accessories tray part #7. Turn piece over and drop in barrel nut. Insert bolt from **(Bag E2)**, through bottom of tray and through barrel nut to secure.